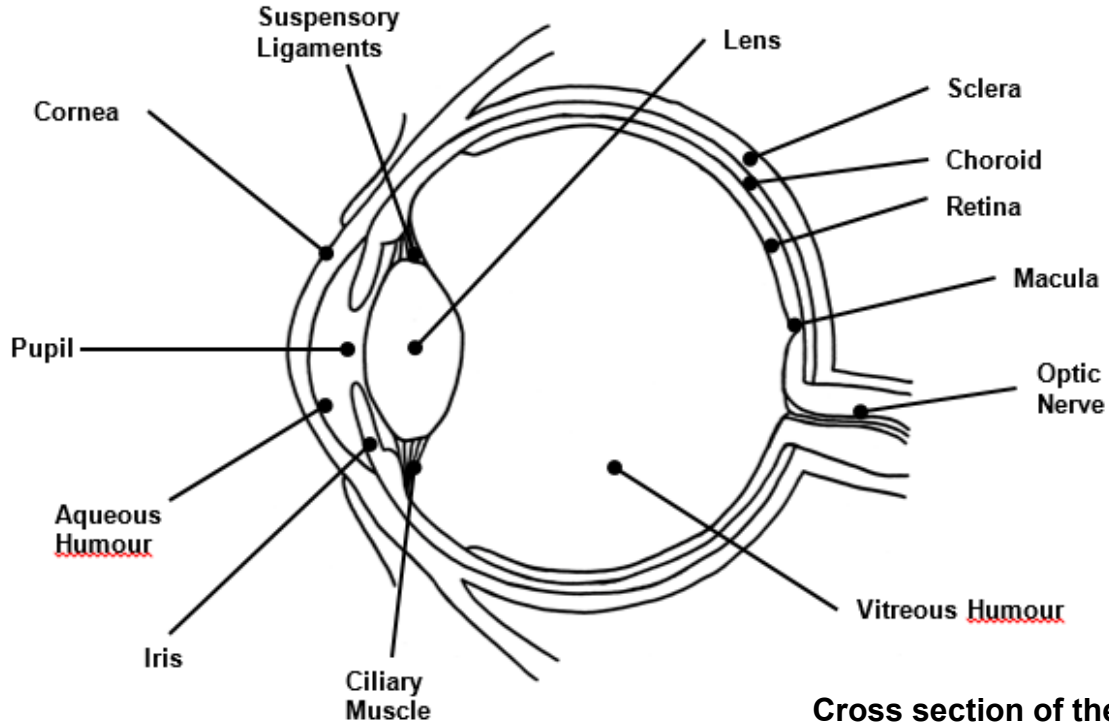


General Eye Information

Structure of the Eye



Cross section of the eyeball

Above is a simple diagram of the eye, from the side, which will help you to understand what parts of the eye different eye conditions affect.

How Does the Eye Work?

- Light rays enter the eye through the transparent front called the cornea.
- They pass through the 'black hole' (pupil) in the coloured area (iris).
- Then through the clear lens which is held in place by ligaments behind the pupil.
- The lens focuses the light rays to pass through a jelly-like substance (the vitreous humour) and form an image on the back lining of the eye (the retina).

- The retina consists of thousands of photoelectric cells, which transform the light into an electric current.
- This message is carried by the optic nerve to the visual centre of the brain.
- The brain decodes the message and tells us what the eye sees.

If there is any damage to the parts, the eye does not work as well. The degree of vision impairment depends on the extent of damage to the structure and the function which that structure performs.



VisAbility

PO Box 101 (61 Kitchener Avenue)
 Victoria Park, WA, 6979
 Phone: 1800 847 466
 Email: info@visability.com.au
www.visability.com.au

